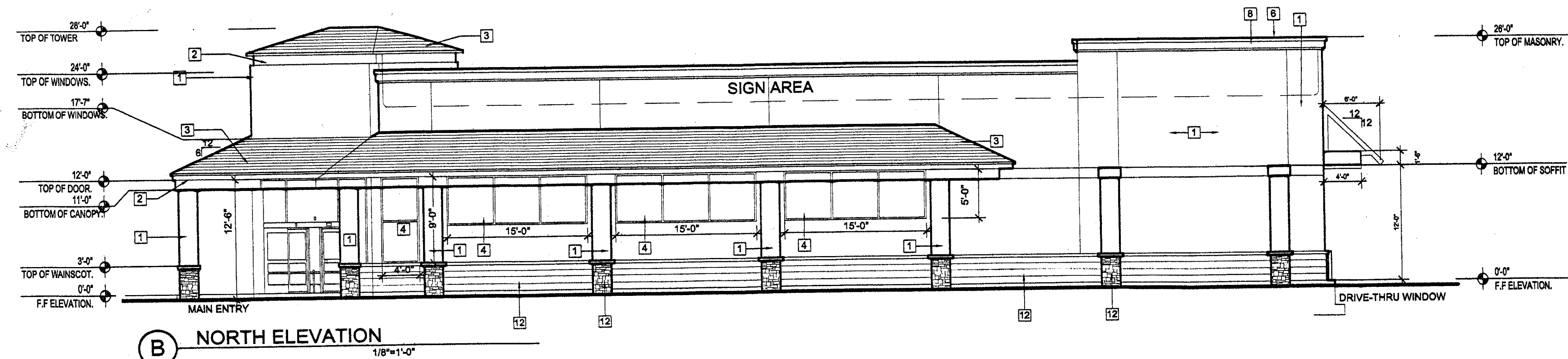
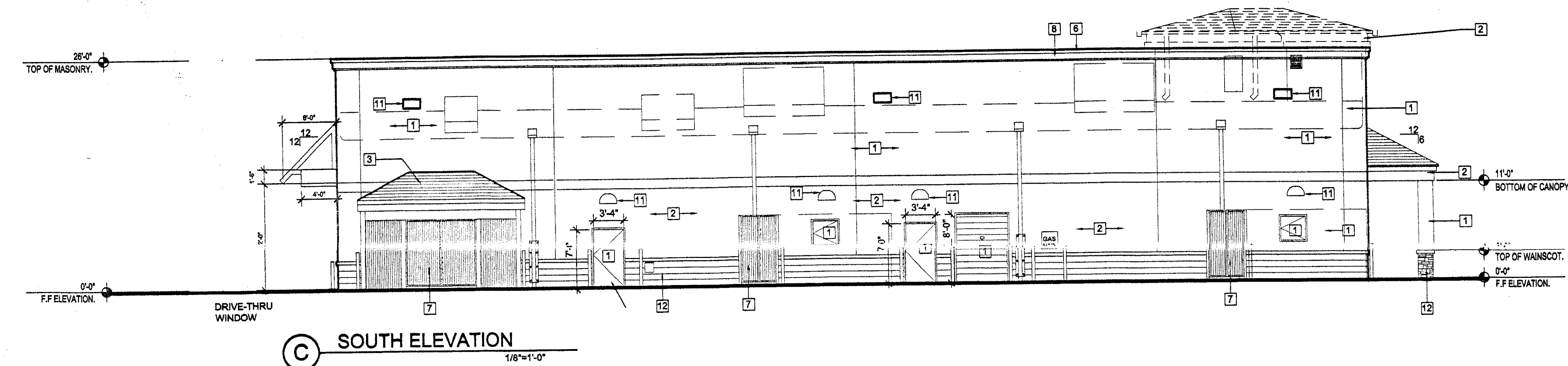


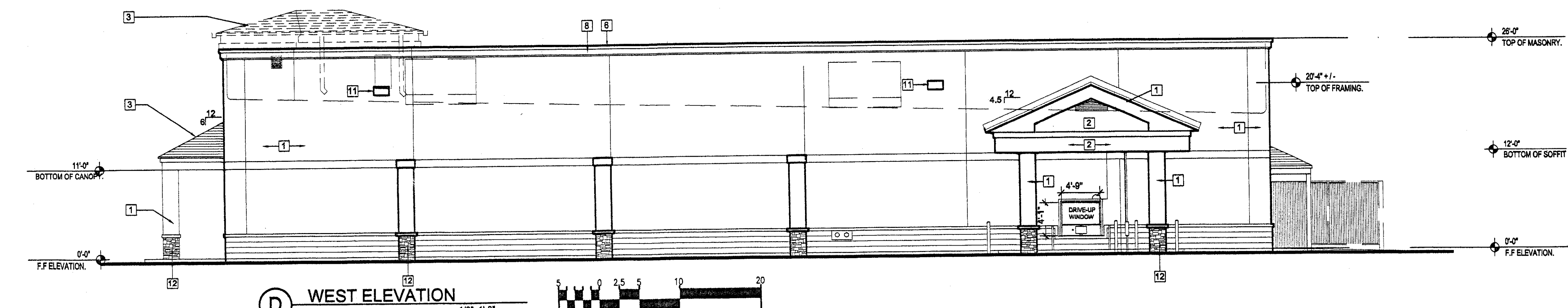
(A) EAST ELEVATION
1/8"=1'-0"



(B) NORTH ELEVATION
1/8"=1'-0"



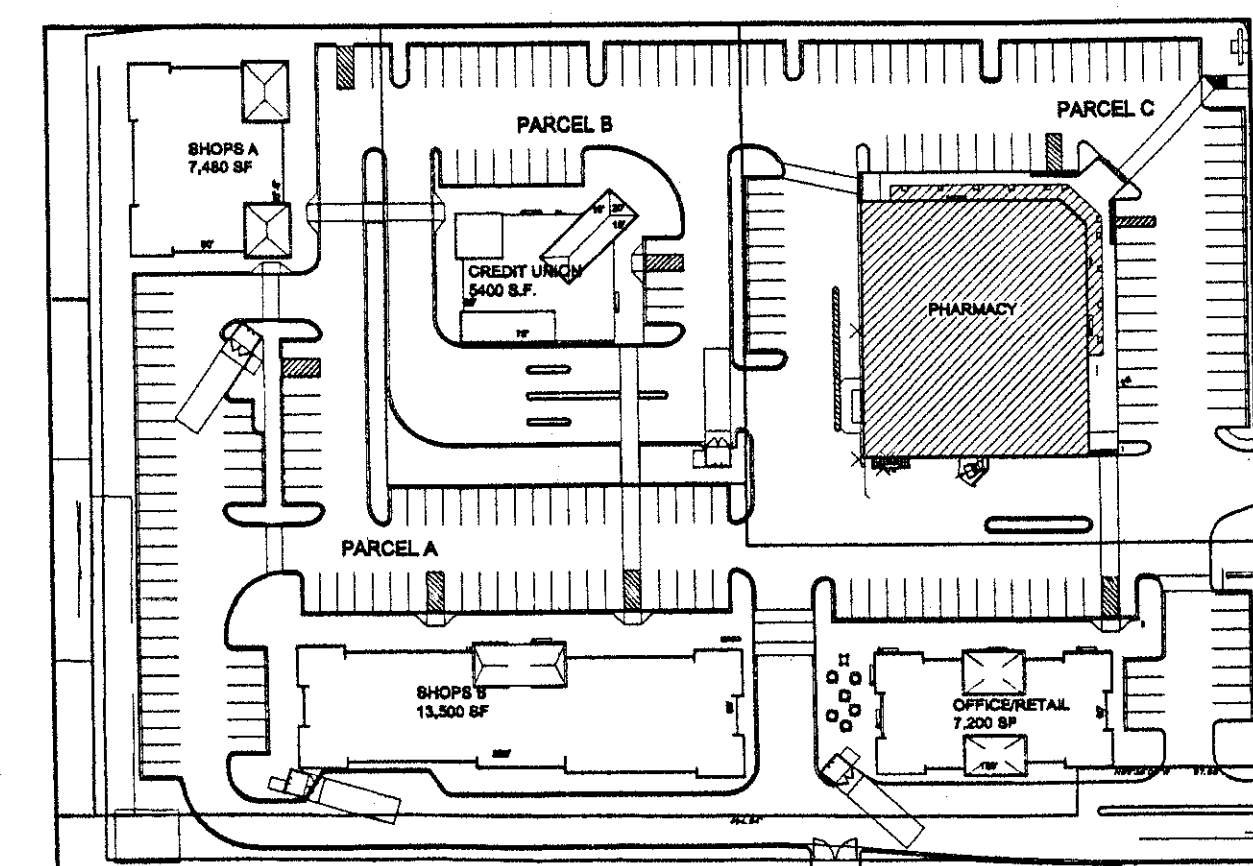
(C) SOUTH ELEVATION
1/8"=1'-0"



(D) WEST ELEVATION
1/8"=1'-0"



Keyed Color	Material Schedule	Common Name
1	STUCCO BM 951 'BONE WHITE'	LIGHT BEIGE
2	STUCCO BM HC-48 'BRADSTREET BEIGE'	WARM BROWN
3	TILE ROOF LIGHT GRAY FLAT CONCRETE TILE	LIGHT GRAY
4	GLASS 1" INSUL. LOW E GLASS W/ CLEAR ANOD. FRAME	CLEAR
5	GLASS 1/4" CLEAR	CLEAR
6	PARAPET CAP UNA-CLAD 'ALMOND'	WARM BROWN
7	STORAGE GATES BM HC-48 'BRADSTREET BEIGE'	WARM BROWN
8	CORNICE BM HC-48 'BRADSTREET BEIGE'	WARM BROWN
9	NOT USED	
10	BLOCK CAP INTEGRAL COLOR	WARM BROWN
11	LIGHT FIXTURE DARK BRONZE	DARK BRONZE
12	CULTURED STONE VENEER BROWN	BROWN

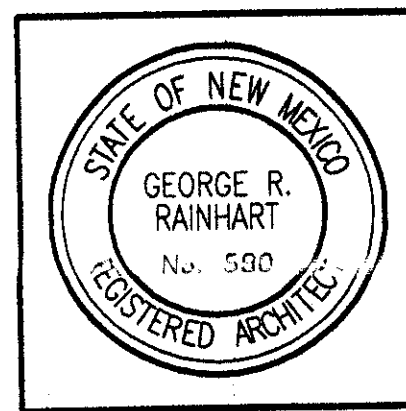


(E) KEY PLAN
NTS

NOTES:
SIGNS NOT TO EXCEED 8% OF THE FACADE TO WHICH IT IS APPLIED FOR SHOPS A, CREDIT UNION AND PHARMACY.
SIGNS NOT TO EXCEED 8% OF THE FACADE TO WHICH IT IS APPLIED FOR SHOPS B, AND OFFICE/RETAIL.
SIGNS TO CONSIST OF INDIVIDUAL ALUMINUM PAN CHANNEL LETTERS, INTERNALLY ILLUMINATED, NO SIGN TO FACE RESIDENTIAL AREAS.

REV	DATE	BY	REVISION
6			
5			
4			
3			
2			
1			

GEORGE RAINHART, ARCHITECT AND ASSOCIATES P.C.
2325 SAN PEDRO NE, SUITE 2-B
ALBUQUERQUE, NEW MEXICO 87110
PHONE (505) 884-9110 FAX (505) 837-9877



PASEO DEL NORTE & VENTURA
PASEO DEL NORTE AND VENTURA
ALBUQUERQUE, NM

ELEVATIONS PHARMACY

PROJECT TITLE: PASEO DEL NORTE & VENTURA
PROJECT MANAGER: JON STERN
JOB NO.: 0717
DRAWN BY: NAT

DATE: 6.22.07
SCALE: 1/8"=1'

sheet: **A3.1**
of